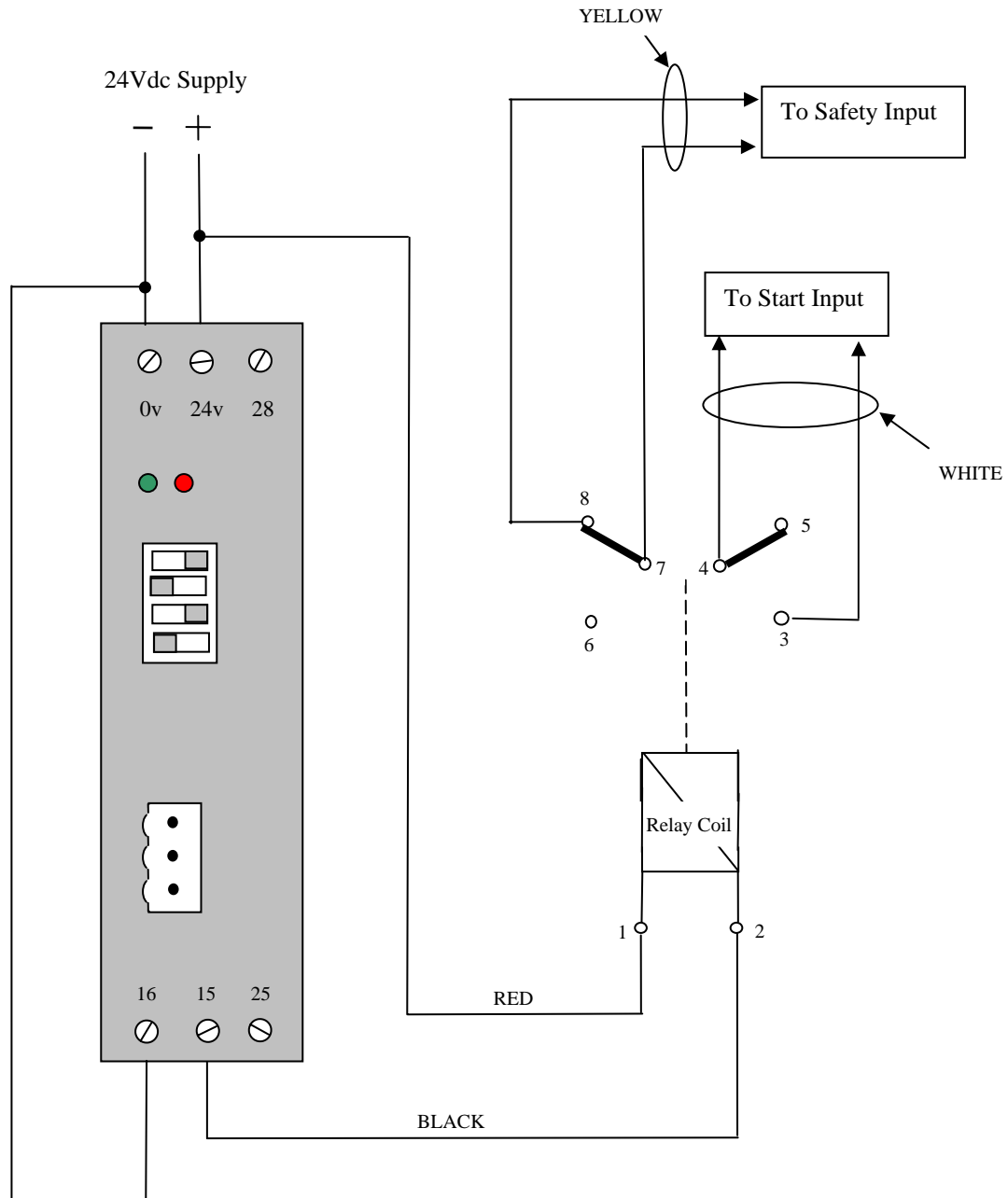


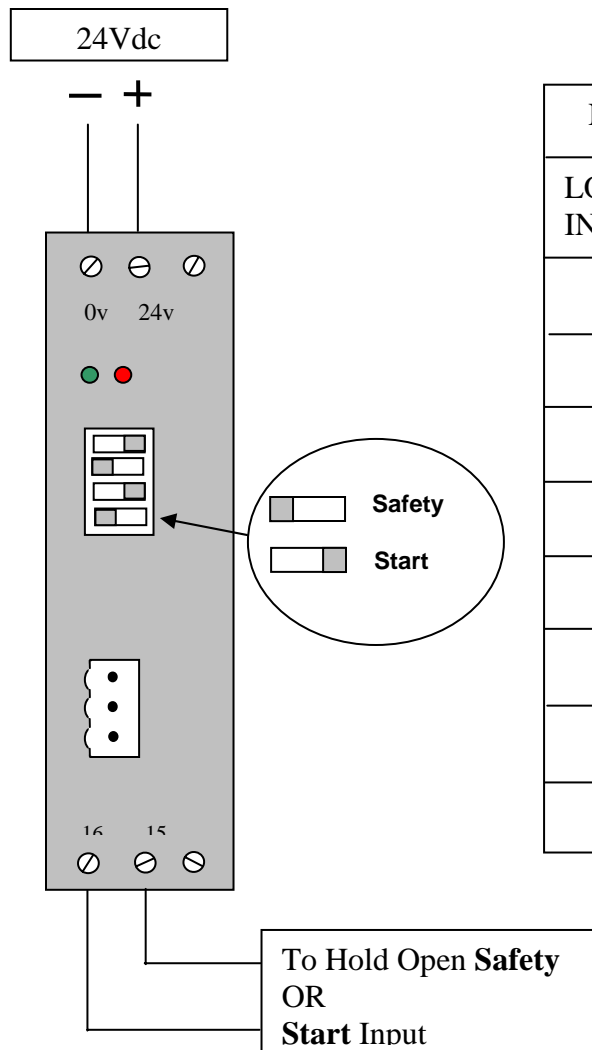
SEA Induction Loop Detector (Part No. 23105161)

Providing 'Hold-Open Safety' and a 'Start-Input' via the contacts of a 24Vdc relay when connected to a SEA Control Panel.

N.B. The Relay contacts are shown in their 'Powered-up State'



SEA Induction Loop Detector (Part No. 23105161)
Providing 'Hold-Open Safety' or 'Start only' when connected to SEA Control



| NUMBER OF TURNS ON A LOOP | |
|---------------------------|-------|
| LOOP PERIMETER IN METRES | TURNS |
| 2 | 7-8 |
| 4 | 6 |
| 6 | 4-5 |
| 8 | 4 |
| 10 | 3-4 |
| 12 | 3 |
| 14 | 2-3 |
| 16 | 2 |

The loop layout drawings below shows a 6 metre perimeter loop cut into tarmac and having 4 turns around the perimeter. Use the chart above to select the correct number of perimeter turns required any given loop.
 Loops may be made up in plastic trunking or conduit and placed in the sand below brick/block drives.
 If 2 no. loops are being connected to 1 loop detector, the loops should be approximately the same size and connected **in series** to the detector

