



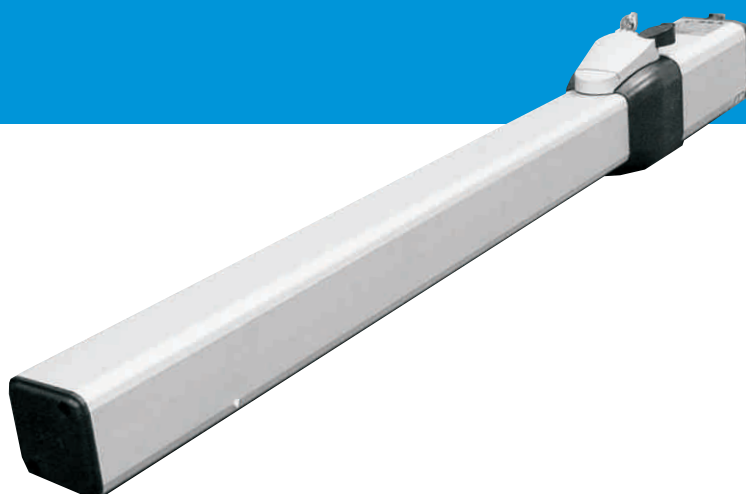
MINI TANK

230V HYDRAULIC SWING GATE OPERATOR

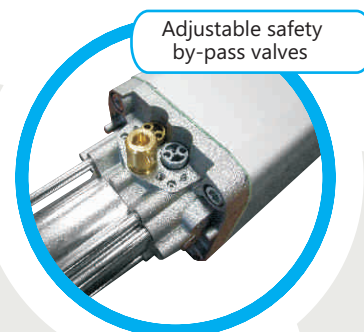
MAX GATE LEAF LENGTH **3M**

CYCLES PER HOUR UP TO **40**

LOCKING **1.8M**



- Hydraulic swing operator for residential use. Maximum leaf length for locking operator 1800 mm.
- Duty cycle of 40 operations per hour can cope with even the busiest of households.
- All main components are manufactured and tested in-house ensuring the highest engineering standards.
- The electric motor and all operational components sit in an oil filled bath ensuring continuous lubrication and rapid cooling for all moving parts.
- Extremely quiet, extremely safe.
- Adjustable electronic slow down at end of travel for a smooth, elegant and quiet system of automation as standard.
- Manual release with customised key for use in the event of power failure.
- Adjustable safety valves in both directions of travel to protect pedestrians vehicles and even the automation equipment from excessive forces.
- Internal non return hydraulic lock valves provide a high strength locking system for gate leaves up to 1.8m in length.
- Brass and stainless steel internal valves and connectors making the Mini Tank operator one of the strongest domestic operators available.
- The hydraulic system means that the Mini Tank can operate large domestic gates with out difficulty for many years to come.
- Reliable and secure manual release system.
- Thermal overload built into the motor to provide the highest level of protection possible.
- 16mm diameter solid metal piston rod with 270mm stroke for ease of installation.
- Supplied with necessary fitting accessories.



Adjustable safety
by-pass valves



Manual Release
underneath centre flange

SEA
The Engineers'
Choice!

MINI TANK

Specifications

Supply Voltage	230Vac+5% 50/60Hz
Motor Power	180 W
Shaft Stroke	270 mm
Cycles Hour	40
Operating temperature	-20°C + 55°C
Operator Weight	10 Kg
Max leaf length	1800 mm operator locking
Opening Degrees	90° - 120°
Shaft Speed	1.5 cm/sec (1.0ltr pump)
Protection class	IP55
Starting Capacitor	8 uF
Max Pushing Force	640 daN

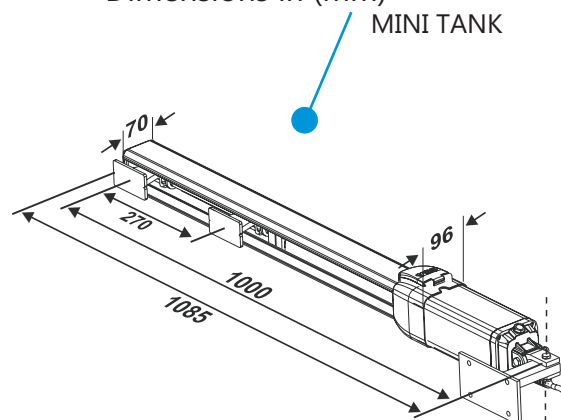
Gate 2 DG Control Panel

- Management of 2, 230Vac motors with or without limit switches
- Automatic logic (4 modes), semiautomatic and step by step logics.
- Electronic slow down in opening and closing.
- Motor run time and pause open time regulation.
- Self-learning operating time for gate with limit switches or encoder
- Self-test on photocells.
- Self-diagnostic system.
- Encoder management (Safety Gate for swing gates).
- Diagnostic dashes on all inputs.
- Extractable connectors for ease of installation.
- Integrated receiver compatible with radio transmitters SMART, HEADROLL and LADYBIRD series (800 users).

Compatible accessories

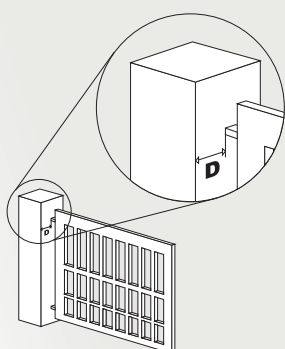
- Fully compatible with all SEA accessories.
- Compatible with most manufacturers of audio and video intercom equipment.
- Digital code pads.
- Card reader systems, stand alone and computer linked.
- Time clocks and hold open switches.
- Induction loop free entry, free exit and safety.
- Photocell free entry, free exit and safety.
- Patented rubber mechanical safety edges.
- Vehicle recognition systems.
- Biometric identification systems.

Dimensions in (mm)



Loop detectors / Photocells / Key pads / Card readers / Transmitters & receivers / Telephone entry systems / Audio and video intercom systems wireless and cabled.

Vehicle recognition systems / Biometric recognition systems / Patented rubber mechanical safety edge / Time clocks / Hold open switches.



SAFETY GATE

Self learning movement sensor for additional safety. SEA patented reversing system for swing gates. EN 12453 & EN 12445 tested



Gate 2 DG Control Panel



Battery Photocells



Optional physical Stops

