



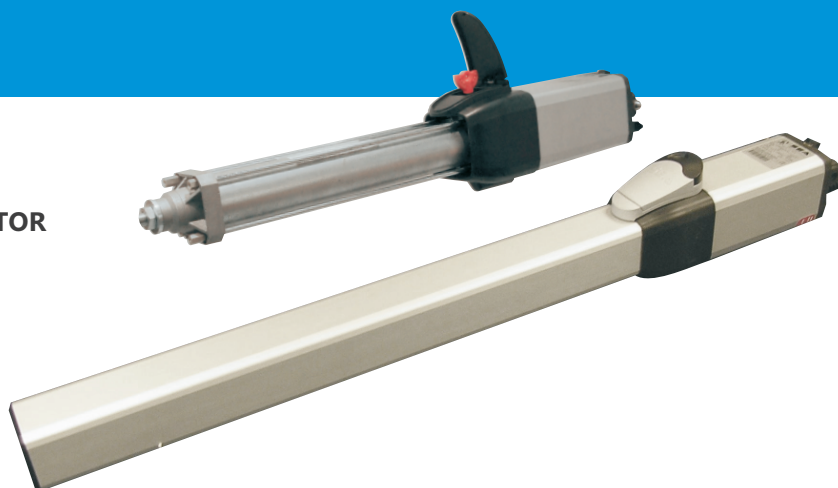
HALF TANK

230V HYDRAULIC SWING GATE OPERATOR

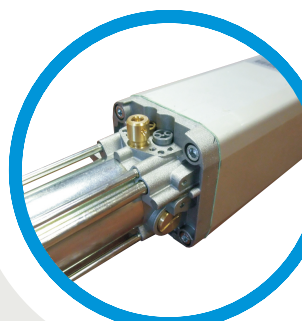
MAX GATE LEAF LENGTH **7M**

CYCLES PER HOUR **55**

LOCKING **2.2M**



- The Half Tank operator is designed for heavy duty use of up to 55 cycles per hour.
- Extremely quiet, safe, strong and reliable and tested in-house ensuring the highest engineering standards.
- Hydraulic swing operator for industrial use, with three pump versions to alter operating speeds for larger gates. for all moving parts.
- The electric motor and all operational components sit in an oil filled bath providing continuous lubrication and rapid cooling
- Thermal overload built into the motor windings to provide the highest level of protection available.
- The use of hydraulic systems guarantee longevity for large industrial and commercial gates.
- Internal non return lock valves provide security against unauthorised access for gate leaves up to 2.2m in length.
- On gate leaves longer than 2.2m additional electro-magnetic or electromechanical locks can be added; ideal for high security sites.
- Brass and stainless steel internal valves and components make the Half Tank operator an extremely strong and robust unit, capable of withstanding the rigours of an industrial environment.
- Reliable manual release system to provide emergency operation; high security metal release cover also available.
- Front bracket ball joint to allow for flexibility and future adjustment. 20 mm diameter solid metal piston rod available in 270mm or 390mm versions.
- Adjustable safety valves in both directions of travel to protect vehicles, the gate and even the automation equipment from excessive forces.
- Optional internal physical stops eliminate the need for floor stops.



Adjustable safety by-pass valves. Easily accessible lock valves allow speedy onsite servicing and repair



Optional metal manual release



Adjustable Ball joint front bracket

SEA
The Engineers'
Choice!

HALF TANK

Specifications

Supply Voltage	230Vac+5% 50/60Hz
Motor Power	220 W
Shaft Stroke	270 / 390 mm
Cycles Hour	55 / 70
Operating temperature	-20°C + 55°C
Operator Weight	11.4 / 13.6 Kgs
Max leaf length	6.0 / 7.0 mtr
Opening Degrees	90° - 120°
Shaft Speed	1.0/ 1.5/ 2.0cm/sec (1.0ltr/ 1.5ltr/ 2.0ltr pumps)
Protection class	IP55
Starting Capacitor	12.5 uF
Max Pushing Force	640 daN

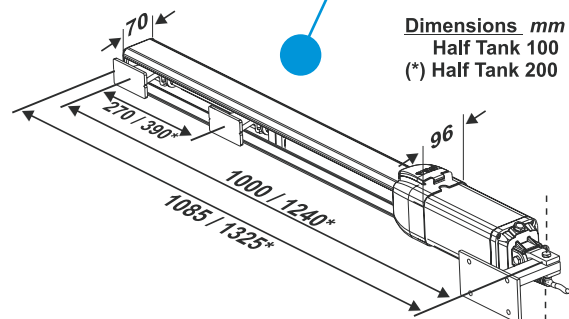
Gate 2 DG Control Panel

- Management of 2, 230Vac motors with or without limit switches
- Automatic logic (4 modes), semiautomatic and step by step logics.
- Electronic slow down in opening and closing.
- Motor run time and pause open time regulation.
- Self-learning operating time for gate with limit switches or encoder
- Self-test on photocells.
- Self-diagnostic system.
- Encoder management (Safety Gate for swing gates).
- Diagnostic dashes on all inputs.
- Extractable connectors for ease of installation.
- Integrated receiver compatible with radio transmitters SMART, HEADROLL and LADYBIRD series (800 users).

Compatible accessories

- Fully compatible with all SEA accessories.
- Compatible with most manufacturers of audio and video intercom equipment.
- Digital code pads.
- Card reader systems, stand alone and computer linked.
- Time clocks and hold open switches.
- Induction loop free entry, free exit and safety.
- Photocell free entry, free exit and safety.
- Patented rubber mechanical safety edges.
- Vehicle recognition systems.
- Biometric identification systems.

Operator Dimensions HALF TANK



Accessories.

Loop detectors / Photocells / Key pads / Card readers / Transmitters & receivers/ Telephone entry systems / Audio and video intercom systems, wireless and cabled. Vehicle recognition systems / Biometric recognition systems / Patented rubber mechanical safety edge / Time clocks / Hold open switches.

Gate 2 DG Control Panel

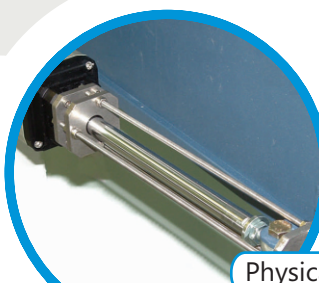


industrial photocell for
extra protection against



SAFETY GATE

Self learning movement sensor for additional safety. SEA patented reversing system for swing gates. EN 12453 & EN 12445 tested



Physical stops